

Parts Manual

Access System

P&H 50t Rough Terrain Crane

Model: ADE005597



| | | |
|----------|---|-----------|
| 1 | GENERAL INFORMATION..... | 1 |
| 2 | MECHANICAL | 2 |
| 2.1 | ACCESS PLATFORMS & LADDER | 2 |
| 3 | ELECTRICAL..... | 5 |
| 3.1 | JUNCTION BOX..... | 5 |
| 3.2 | CONNECTOR ASSEMBLY - SLEW RING | 7 |
| 3.3 | CONTROL PANELS..... | 9 |
| 3.3.1 | <i>Cab Control Console.....</i> | <i>9</i> |
| 3.3.2 | <i>Ground Level Control Panel</i> | <i>11</i> |
| 4 | HYDRAULIC..... | 13 |
| 4.1 | HYDRAULIC CABINET – ACCESS SYSTEM | 13 |
| 4.2 | HYDRAULIC HOSE LISTING | 17 |
| 5 | APPENDIX..... | 18 |
| 5.1 | ELECTRICAL SCHEMATIC | 18 |
| 5.2 | HYDRAULIC SCHEMATIC..... | 20 |

1 General Information

The Parts Manual is a compilation of replacement parts for the access system as fitted by Australian Diversified Engineering.

Refer to the Operation and Maintenance Manual Supplement (ADE006413) for operation and maintenance procedures for the access system.

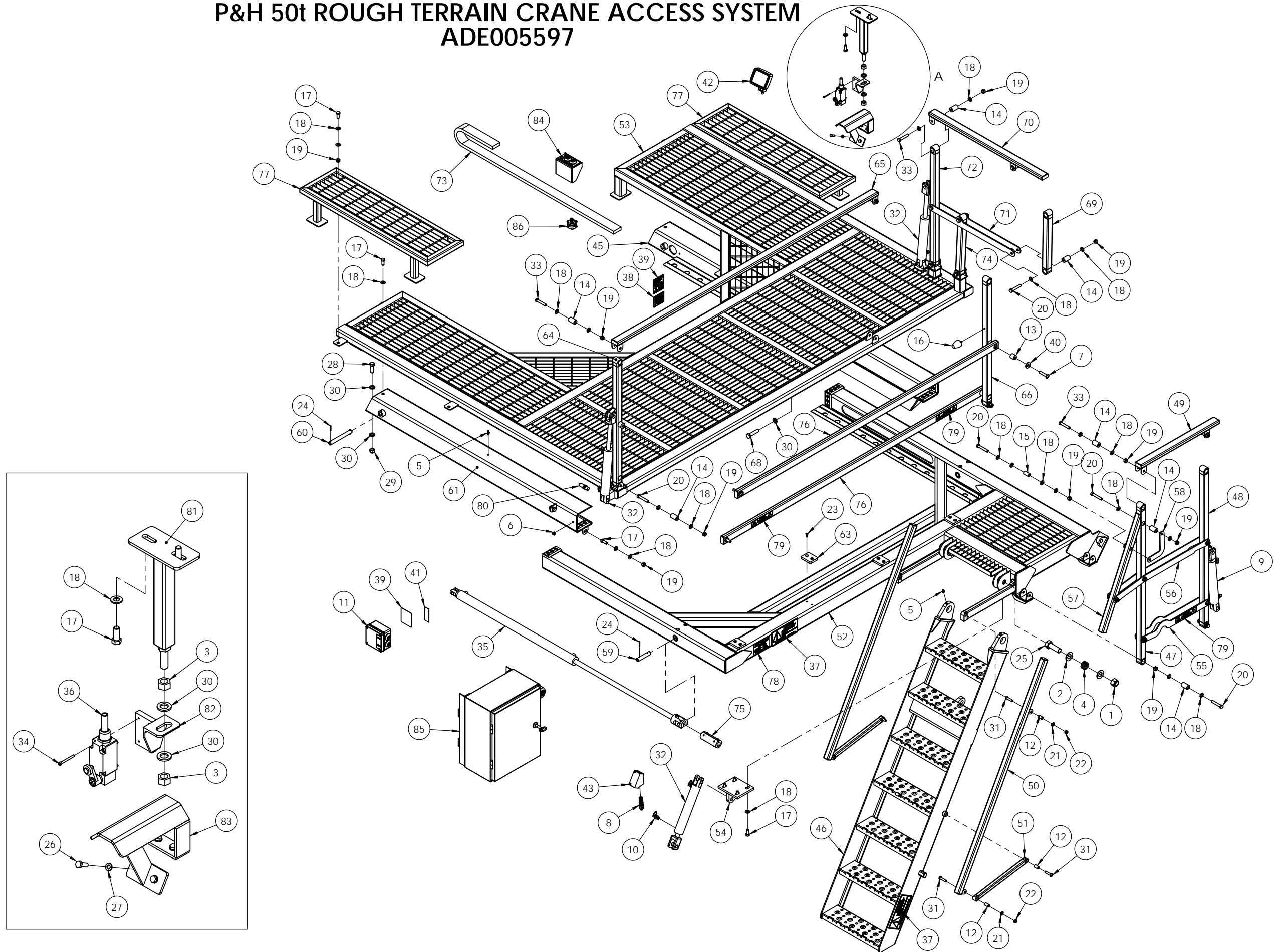
NOTE: Site modifications performed to the access system unless under consultation with Australian Diversified Engineering may not be contained within this manual.

Consult Australian Diversified Engineering if replacement manuals are required.

2 Mechanical

2.1 Access Platforms & Ladder

P&H 50t ROUGH TERRAIN CRANE ACCESS SYSTEM ADE005597



P&H 50t ROUGH TERRAIN CRANE ACCESS SYSTEM ADE005597

| ITEM NO. | PART NUMBER | NAME | Crane Hidden/QTY. |
|----------|-------------|--|-------------------|
| 1 | ADE000373 | Nut | 2 |
| 2 | ADE000374 | Washer | 4 |
| 3 | ADE000640 | Nut | 2 |
| 4 | ADE000733 | Bearing | 2 |
| 5 | ADE000898 | Grease Nipple | 5 |
| 6 | ADE000899 | Grease Nipple 90° | 5 |
| 7 | ADE000901 | Bolt | 4 |
| 8 | ADE000941 | Hyd Component | 1 |
| 9 | ADE001307a | Hydraulic Cylinder 1.5" x 6" | 1 |
| 10 | ADE001309 | Hyd Fitting | 8 |
| 11 | ADE001315 | Ground Level Control Panel | 1 |
| 12 | ADE001337 | Bush | 4 |
| 13 | ADE001339 | Bush | 4 |
| 14 | ADE001340 | Bush | 20 |
| 15 | ADE001353 | Bush | 2 |
| 16 | ADE001354 | Bonded Buffer | 1 |
| 17 | ADE001366 | Bolt | 15 |
| 18 | ADE001367 | Washer | 70 |
| 19 | ADE001368 | Nut | 29 |
| 20 | ade001379 | Bolt | 16 |
| 21 | ADE001380 | Washer | 4 |
| 22 | ADE001381 | Nut | 4 |
| 23 | ADE001384 | Bolt | 8 |
| 24 | ADE001388 | Roll Pin | 8 |
| 25 | ADE001403 | Bolt | 2 |
| 26 | ADE001418 | Bolt | 4 |
| 27 | ADE001421 | Washer | 4 |
| 28 | ADE001426 | Bolt | 4 |
| 29 | ADE001427 | Nut | 4 |
| 30 | ADE001428 | Washer | 11 |
| 31 | ADE003383 | Bolt | 6 |
| 32 | ADE003645a | Hydraulic Cylinder 1.5" x 6" Para Port | 3 |
| 33 | ADE003687 | Bolt | 6 |
| 34 | ADE003732 | Bolt | 4 |
| 35 | ADE003843a | Hydraulic Cylinder 1.5" x 30" | 2 |
| 36 | ADE003966 | Limit Switch | 1 |
| 37 | ADE004133 | Label - Keep Clear... | 2 |
| 38 | ADE004142 | Label - This machine has been... | 1 |
| 39 | ADE004144 | Label - Access System... | 2 |
| 40 | ADE004401 | Washer | 4 |
| 41 | ade004752 | Label - Raise/Lower | 1 |
| 42 | ADE005258 | Light 3" Flood 24v | 1 |
| 43 | ADE005455 | Manifold Body | 1 |

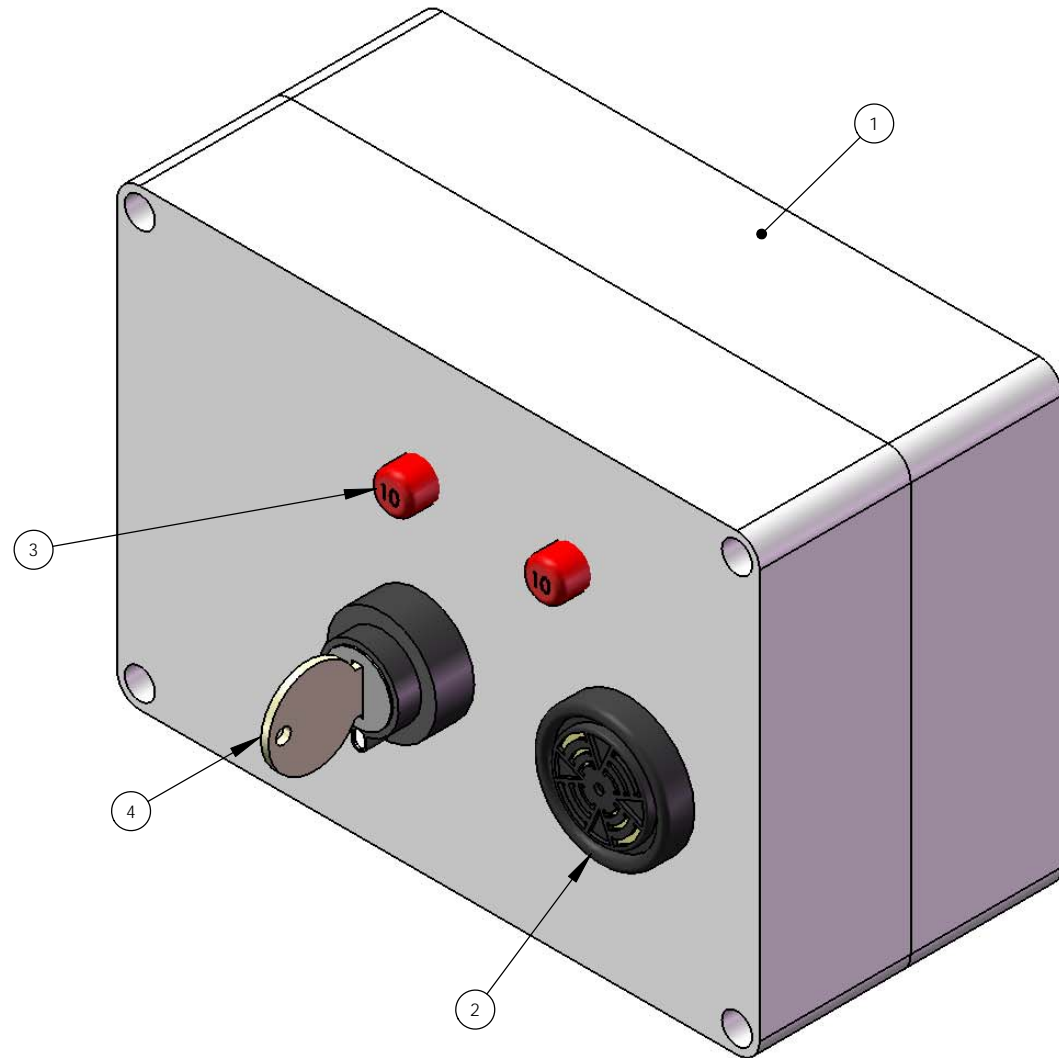
| ITEM NO. | PART NUMBER | NAME | Crane Hidden/QTY. |
|----------|-------------|---------------------------------|-------------------|
| 44 | ADE005481 | Tab - Small (weld-on) | 1 |
| 45 | ADE005483 | Slider Arm - Rear | 1 |
| 46 | ADE005490 | Ladder | 1 |
| 47 | ADE005496 | Stanchion - Landing Front | 1 |
| 48 | ADE005499 | Stanchion - Landing Rear | 1 |
| 49 | ADE005506 | Handrail - Slide out platform | 1 |
| 50 | ADE005508 | Handrail - Ladder | 2 |
| 51 | ADE005510 | Stanchion - Ladder | 2 |
| 52 | ADE005540 | Slider Frame | 1 |
| 53 | ADE005561 | Platform | 1 |
| 54 | ADE005563 | Cylinder Pivot | 1 |
| 55 | ADE005564 | Bottom Rail | 2 |
| 56 | ADE005565 | Midrail | 2 |
| 57 | ADE005566 | Handrail - Intermediate | 1 |
| 58 | ADE005569 | Link - Intermediate Handrail | 2 |
| 59 | ADE005570 | Pin - Cylinder Rod End | 2 |
| 60 | ADE005571 | Pin - Cylinder Base End | 2 |
| 61 | ADE005574 | Slider Arm - Front | 1 |
| 62 | ADE005575 | Skid Plate - Ladder | 1 |
| 63 | ADE005576 | Wear Pad | 4 |
| 64 | ADE005577 | Stanchion - Platform Side Front | 1 |
| 65 | ADE005579 | Handrail - Platform | 1 |
| 66 | ADE005581 | Stanchion - Platform Side Rear | 1 |
| 67 | ADE005584 | Tab - Large (weld-on) | 1 |
| 68 | ADE005585 | Bolt | 1 |
| 69 | ADE005586 | Stanchion - Top Half | 1 |
| 70 | ADE005588 | Handrail | 1 |
| 71 | ADE005590 | Midrail | 2 |
| 72 | ADE005591 | Stanchion - Rear | 1 |
| 73 | ADE005594 | Flexible Cable Track | 1 |
| 74 | ADE005595 | Stanchion - Rear | 1 |
| 75 | ADE005642 | Spacer Collar | 2 |
| 76 | ADE005649 | Midrail | 2 |
| 77 | ADE006151 | Platform - Small | 2 |
| 78 | ADE006241 | ID Plate | 1 |
| 79 | ADE006445 | Label - Warning Pinch Points... | 3 |
| 80 | ADE006504 | Proximity Switch | 1 |
| 81 | ADE006506 | Support Bracket | 1 |
| 82 | ADE006509 | Bracket - Roller Lever Switch | 1 |
| 83 | ADE006511 | Striker Bracket | 1 |
| 84 | ADE006716 | Cab Control Panel | 1 |
| 85 | ADE006768 | 3 Stage Hydraulic Power Pack | 1 |
| 86 | ADE006887 | Connector Assembly | 1 |

3 Electrical

3.1 Junction Box

**JUNCTION BOX - UNDER DASH
SUIITS P&H 50t RT CRANE
ADE006790**

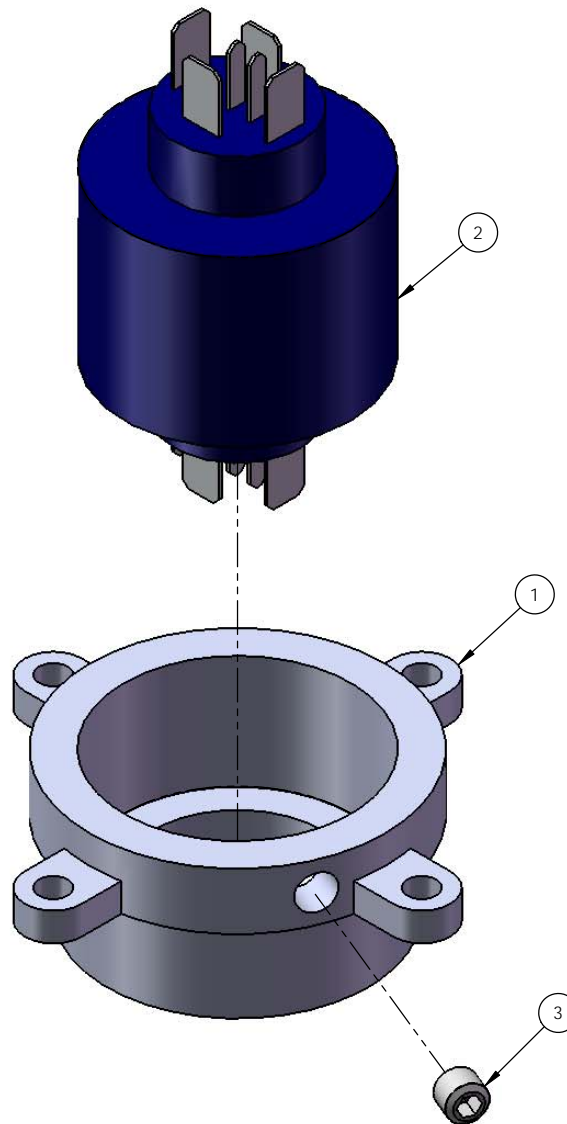
| ITEM NO. | PART NUMBER | NAME | QTY. |
|----------|-------------|----------------------|------|
| 1 | ADE006787 | Junction Box | 1 |
| 2 | ADE001319 | Control Panel Buzzer | 1 |
| 3 | ADE003929 | Circuit Breaker 10A | 2 |
| 4 | ADE006732 | Key Switch | 1 |



3.2 Connector Assembly - Slew Ring

CONNECTOR ASSEMBLY - SLEW RING
SUITS P&H 50t RT CRANE
ADE006887

| ITEM NO. | PART NUMBER | NAME | QTY. |
|----------|-------------|------------------|------|
| 1 | ADE006319 | Mount Bracket | 1 |
| 2 | ADE006884 | Connector | 1 |
| 3 | ADE006888 | Socket Set Screw | 1 |

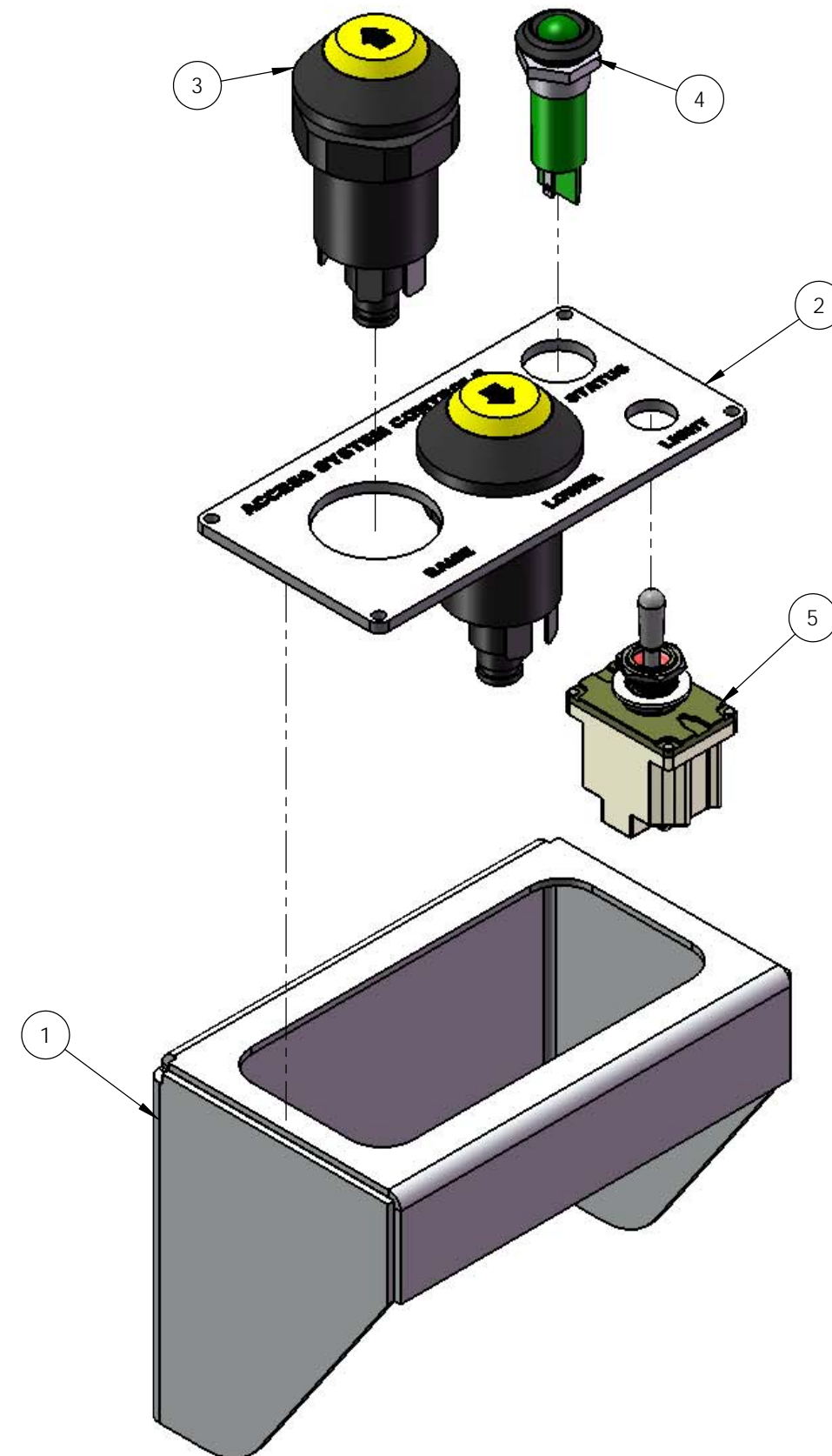


3.3 Control Panels

3.3.1 Cab Control Console

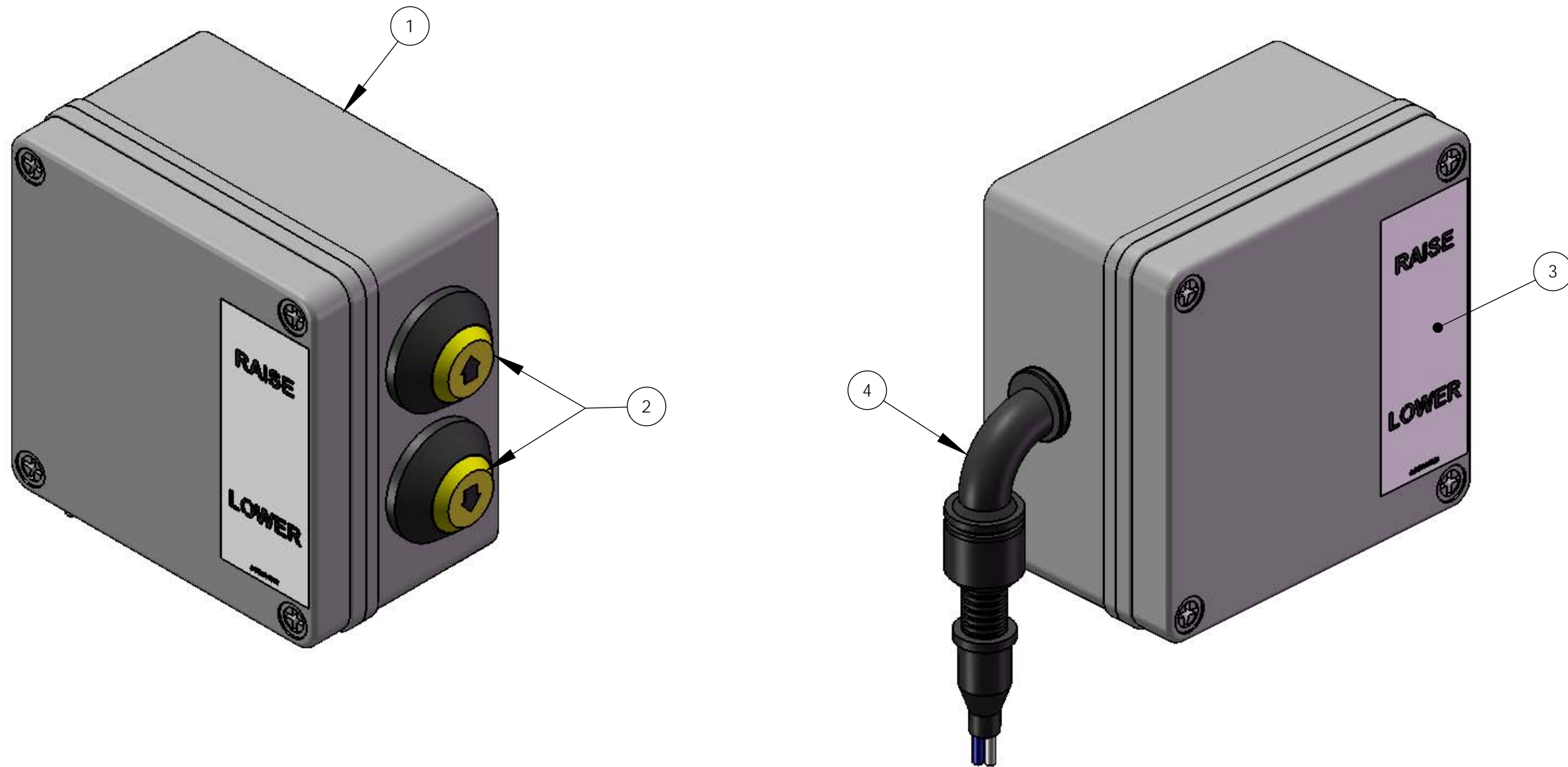
CAB CONTROL PANEL P&H 50t ROUGH TERRAIN CRANE ACCESS SYSTEM ADE006716

| ITEM NO. | PART NUMBER | NAME | QTY. |
|----------|-------------|-----------------------------|------|
| 1 | ADE006277 | Bracket - Cab Control Panel | 1 |
| 2 | ADE006273 | Cab Control Plate | 1 |
| 3 | ADE003708 | Switch | 2 |
| 4 | ADE001317 | LED Green | 1 |
| 5 | ADE004421 | Toggle Switch | 1 |



3.3.2 Ground Level Control Panel

GROUND LEVEL CONTROL PANEL ADE001315

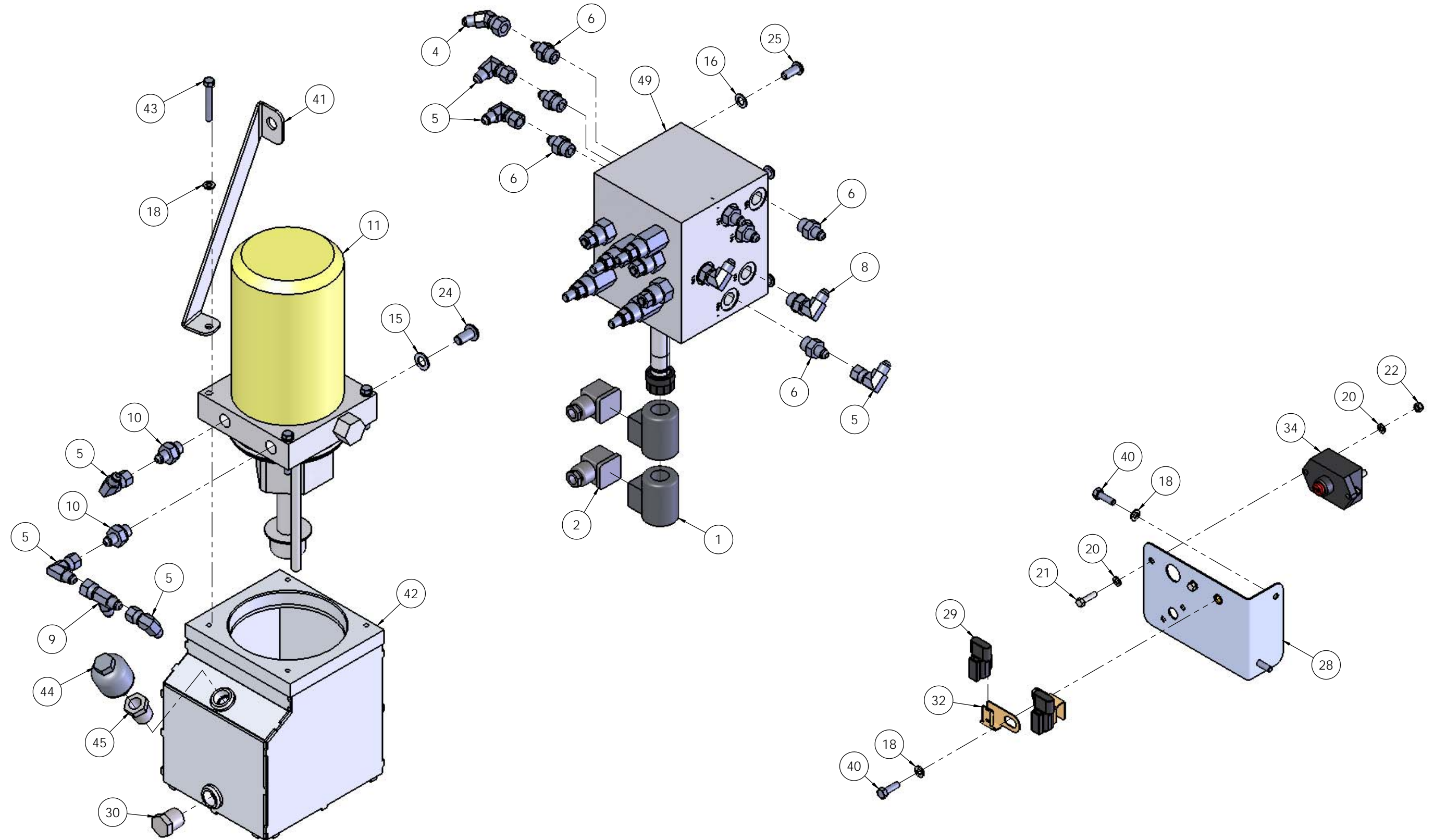


| ITEM NO. | PART NUMBER | NAME | QTY. |
|----------|-------------|--------------------------|------|
| 1 | ADE003677 | Ground Level Control Box | 1 |
| 2 | ADE003708 | Switch | 2 |
| 3 | ade004752 | Label - Raise/Lower | 1 |
| 4 | ADE004753 | Gland | 1 |

4 Hydraulic

4.1 Hydraulic Cabinet – Access System

3 STAGE HYDRAULIC POWER PACK SUITS P&H 50t RT CRANE ADE006768



**3 STAGE HYDRAULIC POWER PACK
SUITS P&H 50t RT CRANE
ADE006768**

| ITEM NO. | PART NUMBER | NAME | Default/QTY. |
|----------|-------------|-----------------|--------------|
| 1 | ADE000099 | Coil 24 Volt | 2 |
| 2 | ADE000100 | Plug Hirschmann | 2 |
| 3 | ADE000303 | Bolt | 1 |
| 4 | ADE000426 | Hyd Fitting | 1 |
| 5 | ADE000443 | Hyd Fitting | 6 |
| 6 | ADE000521 | Hyd Fitting | 7 |
| 7 | ADE001137 | Bolt | 1 |
| 8 | ADE001309 | Hyd Fitting | 2 |
| 9 | ADE001310 | Hyd Fitting | 1 |
| 10 | ADE001311 | Hyd Fitting | 2 |
| 11 | ADE001313 | Pump Unit | 1 |
| 12 | ADE001320 | Alarm Buzzer | 1 |
| 13 | ADE001367 | Washer | 8 |
| 14 | ADE001368 | Nut | 4 |
| 15 | ADE001373 | Washer | 2 |
| 16 | ADE001374 | Washer | 4 |
| 17 | ADE001380 | Washer | 1 |
| 18 | ADE001386 | Washer | 13 |
| 19 | ADE001387 | Nut | 2 |
| 20 | ADE001409 | Washer | 4 |
| 21 | ADE001417 | Bolt | 2 |
| 22 | ADE001419 | Nut | 2 |
| 23 | ADE001421 | Washer | 4 |
| 24 | ADE001422 | Screw | 2 |
| 25 | ADE001423 | SCREW | 4 |

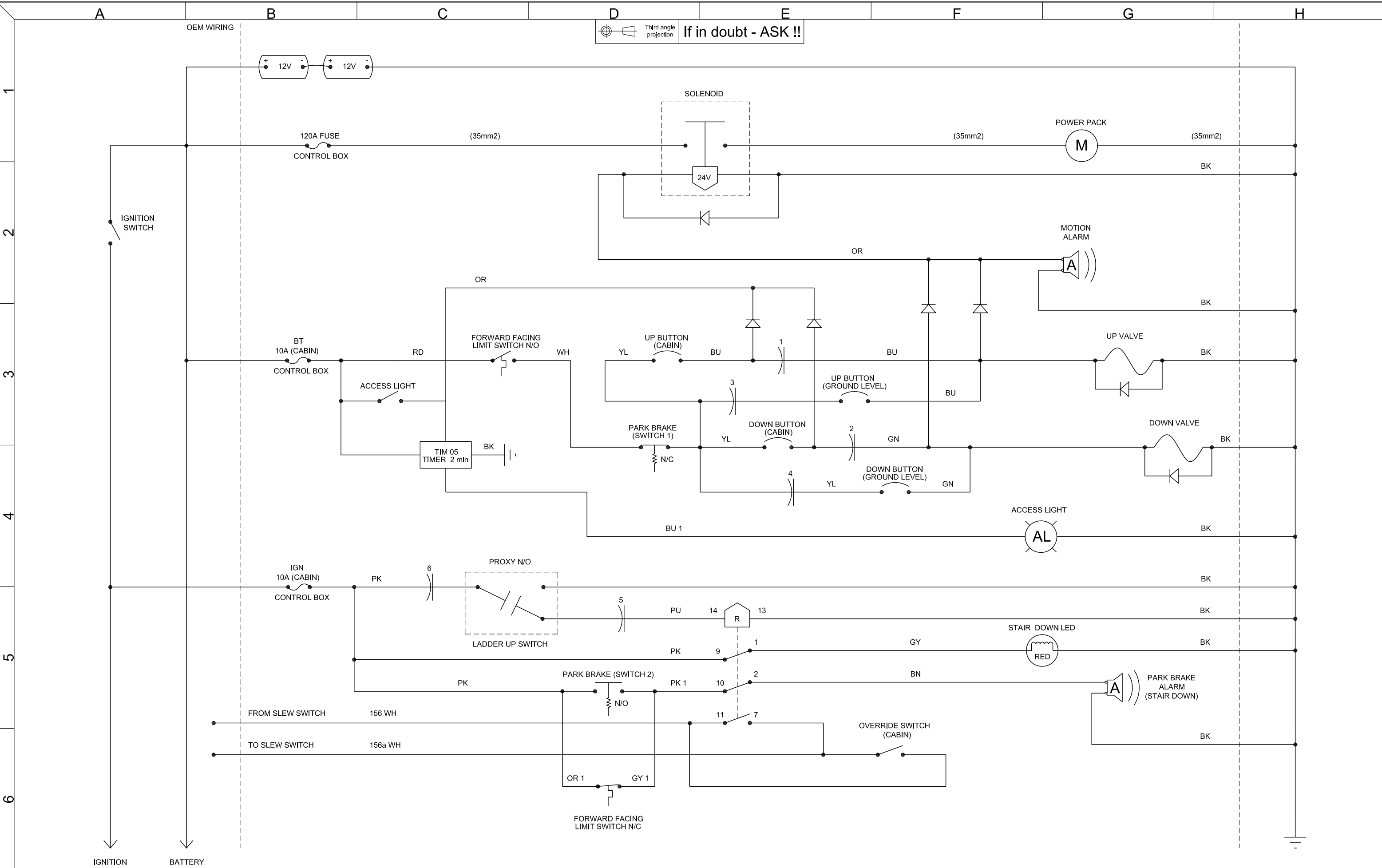
| ITEM NO. | PART NUMBER | NAME | Default/QTY. |
|----------|-------------|---------------------------|--------------|
| 26 | ADE001717 | Nut M8 | 2 |
| 27 | ADE002512 | Hydraulic Cabinet Bracket | 1 |
| 28 | ADE002517 | Fuse Panel, SS | 1 |
| 29 | ADE002551 | Diode | 2 |
| 30 | ADE002725 | Plug | 1 |
| 31 | ADE002804 | Bolt | 4 |
| 32 | ADE003755 | Deutch Bracket | 4 |
| 33 | ADE003824 | Door Lock | 1 |
| 34 | ADE003924 | Circuit Breaker 120A | 1 |
| 35 | ADE003933 | Conduit End Sleeve | 1 |
| 36 | ADE004098 | Gland | 1 |
| 37 | ADE004169 | Gland | 1 |
| 38 | ADE004199 | Nutsert | 1 |
| 39 | ADE004244 | P-Clip | 2 |
| 40 | ADE004306 | Bolt | 7 |
| 41 | ADE004403 | Pump Brace | 1 |
| 42 | ADE004582 | Hydraulic Reservoir | 1 |
| 43 | ADE004979 | Bolt | 4 |
| 44 | ADE004982 | Breather | 1 |
| 45 | ADE004983 | Reducing Bush | 1 |
| 46 | ADE004989 | Gland | 1 |
| 47 | ADE005152 | Hydraulic Cabinet | 1 |
| 48 | ADE005386 | Conduit | 1 |
| 49 | ADE006769 | Manifold Block | 1 |
| 50 | ADE006812 | Key | 1 |

4.2 Hydraulic Hose Listing

| HOSE PART NO. | WHERE USED | QUANTITY |
|----------------------|--|-----------------|
| ADE006521 | PLATFORM LONG HANDRAIL CYL ROD END – TEE TO CYL | 1 |
| ADE006522 | PLATFORM LONG HANDRAIL CYL BARREL END – TEE TO CYL | 1 |
| ADE006523 | LADDER CYL ROD & BARREL ENDS – TEE TO TEE | 2 |
| ADE006524 | PLATFORM SHORT HANDRAIL CYL ROD END – TEE TO CYL | 1 |
| ADE006525 | PLATFORM SHORT HANDRAIL BARREL END – TEE TO CYL | 1 |
| ADE006527 | LADDER CYL ROD END – TEE TO CYL | 1 |
| ADE006528 | LADDER CYL BARREL END – TEE TO CYL | 1 |
| ADE006529 | SLIDER FRAME HANDRAIL CYL ROD END – TEE TO CYL | 1 |
| ADE006530 | SLIDER FRAME HANDRAIL CYL BARREL END – TEE TO CYL | 1 |
| ADE006531 | BLOCK PORTS – SC1 & SC2 TO TEE | 2 |
| ADE006532 | BLOCK PORT – RC1 TO TEE | 1 |
| ADE006533 | BLOCK PORT – RC2 TO TEE | 1 |
| ADE006535 | SLIDER FRAME FRONT 30" CYL ROD END – TEE TO CYL | 1 |
| ADE006536 | SLIDER FRAME FRONT 30" CYL BARREL END – TEE TO CYL | 1 |
| ADE006537 | SLIDER FRAME REAR 30" CYL ROD END – TEE TO CYL | 1 |
| ADE006538 | SLIDER FRAME REAR 30" CYL BARREL END – TEE TO CYL | 1 |

5 Appendix

5.1 Electrical Schematic



Third angle projection
If in doubt - ASK !!

The furnishing of this drawing does not convey any manufacturing rights. It is to be considered a confidential document and must not be reproduced without consent of the owner.

| Revisions | Rev | Grid | Date | Description |
|-----------|-----|------|------|-------------|
| | A | - | - | - |
| | B | - | - | - |
| | C | - | - | - |
| | D | - | - | - |
| | E | - | - | - |
| | F | - | - | - |



| | | | | | | | |
|---------|----------|----------|---|----------------------|-------------|--------------------------------|----|
| Client | | - | | Description | | P&H 50T RT CRANE ACCESS SYSTEM | |
| Project | | - | | ELECTRICAL SCHEMATIC | | | |
| Drawn | BGC | Checked | - | Scale | Drawing No. | Rev | |
| Date | 02/07/09 | Approved | - | N/A | ADE006556 | A | A3 |

5.2 Hydraulic Schematic

NOTES: (To be updated for crane access)

Approximate settings:

SCCA1 - 2½ turns from fully in

SCCA2 - 3¼ turns from fully in

SCCA3 - 3½ turns from fully in

SCCA4 - 2¾ turns from fully in

CBCA1 - 2½ turns from fully out

CBCA2 - 1 turn from fully out

Set pressures -

Pump relief - 3000 psi

Stow stage 1 - 1600 psi

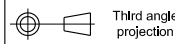
Stow stage 2 - 2000 psi

Stow stage 3 - 2300 psi

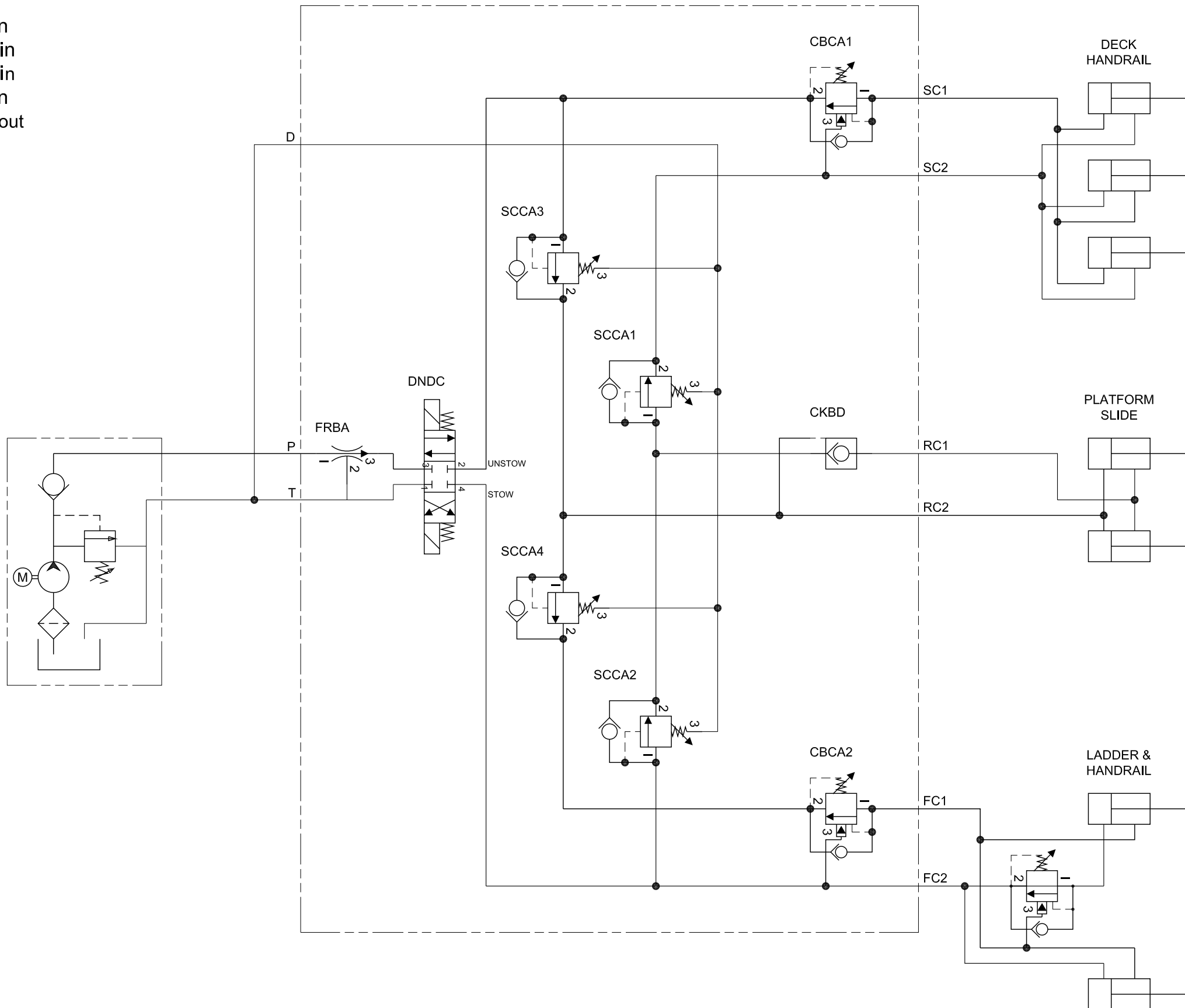
Unstow stage 1 - 1300 psi

Unstow stage 2 - 1800 psi

Unstow stage 3 - 2200 psi



If in doubt - ASK !!



The furnishing of this drawing does not convey any manufacturing rights. It is to be considered a confidential document and must not be reproduced without consent of the owner.

| Revisions | Rev | Grid | Date | Description |
|-----------|-----|------|------|-------------|
| | A | - | - | - |
| | B | - | - | - |
| | C | - | - | - |
| | D | - | - | - |
| | E | - | - | - |
| | F | - | - | - |



"SPECIALISING IN INTELLIGENT ENGINEERING SOLUTIONS"

| | |
|----------|----------|
| Client | - |
| Project | - |
| Drawn | DK |
| Checked | CWG |
| Date | 09/06/09 |
| Approved | |

| | | | |
|-------------|-----|---|-----------|
| Description | | P&H 50T RT CRANE THREE STAGE ACCESS HYDRAULIC SCHEMATIC | |
| Scale | N/A | Drawing No. | ADE006386 |
| Rev | - | | A3 |